

PROJECT GALLERY 90

'FRIENDS IN SPACES'

Works by:

Ingrid Haydon

2021 Catalogue

For enquiries contact:
Kate Hopkinson Pointer

info@projectgallery90.com
0402 144 350

All artworks shown in this catalogue are subject to availability

Artist's Statement

Ingrid Haydon

For most of my 35-year career as an exhibiting artist, I've avoided painting interiors. This is partly because my mother, also a professional artist, painted interiors, and because I wanted to paint what I considered more challenging pictures. I certainly didn't want my work to be considered feminine, and my early works were based on cityscapes and later landscapes. I was particularly chuffed when colleagues commented that my work was tough; one comment was that it had "balls". Praise indeed!

However, I've finally reached a point in life where I don't care what others think and my love for colour and the endless possibilities of painting interiors is too great to ignore. This is my second interior show in recent years but lush colour and, in particular, the figure is playing a much larger part this time, albeit as a part of the interior rather than the focus.

My interior exploration began while living in the Blue Mountains, when it wasn't always possible to get outside to draw because of the weather. At the same time, I encountered many inspiring mountain interiors, many belonging to that began to shift my focus from landscape and cityscapes to more intimate subjects.

After moving to the Central Coast to be closer to children and grandchildren, I scored a large, light filled studio to work in behind my house, which gave me space for a more relaxed approach. I began drawing landscapes and the occasional interior when meeting regularly with local friends. I also found renewed interest in portraits and began to feel confident to work with figures again so they began to quietly creep into the interiors. Due to my early career as early career as a textile designer, I was also able to enjoy the various patterns found within these spaces. These works are not figures in interiors, rather the figures are an integrated part of the interior spaces.

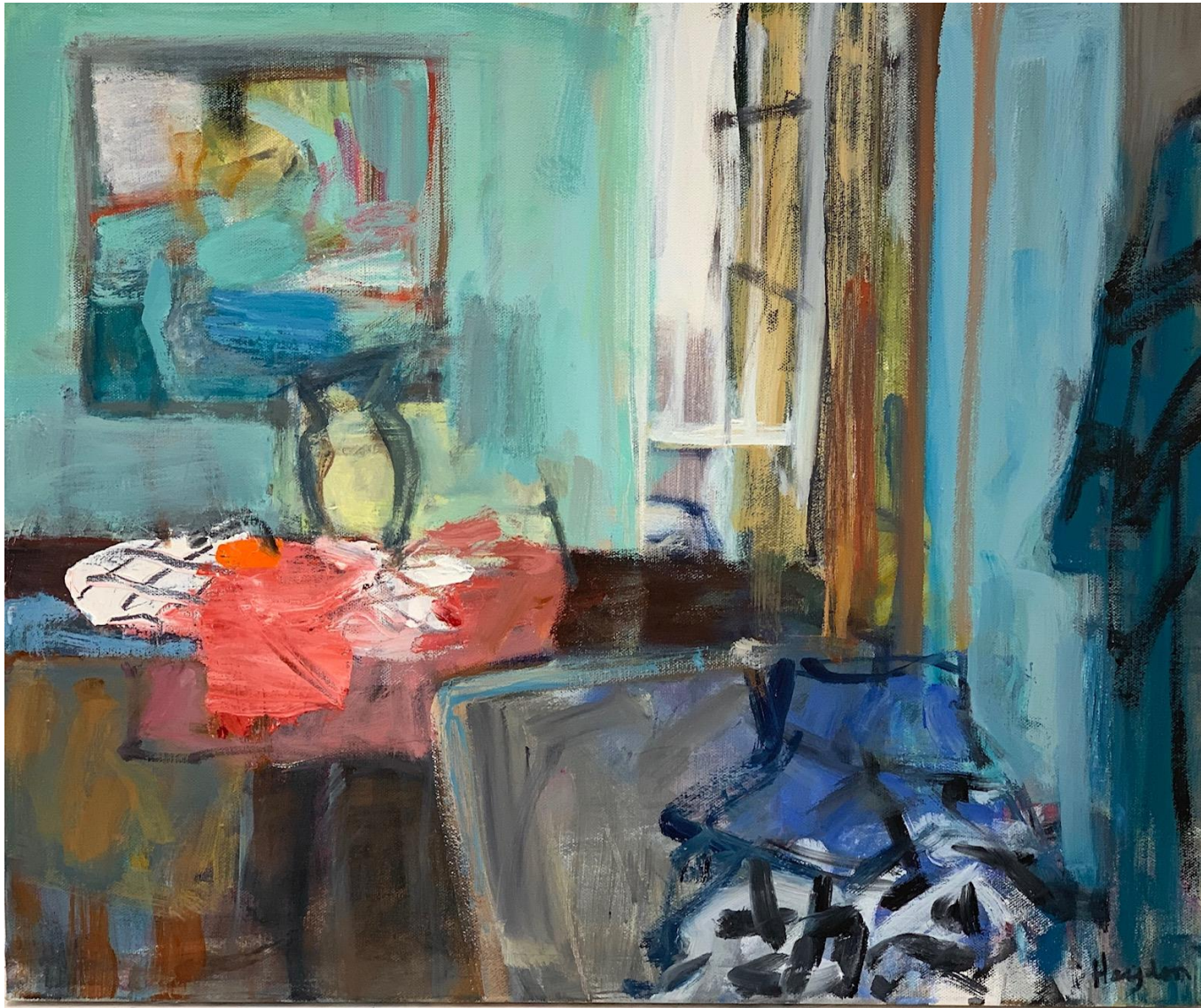




'Sunday Brunch'; oil on canvas, 101.5x76cm, framed, \$4,290



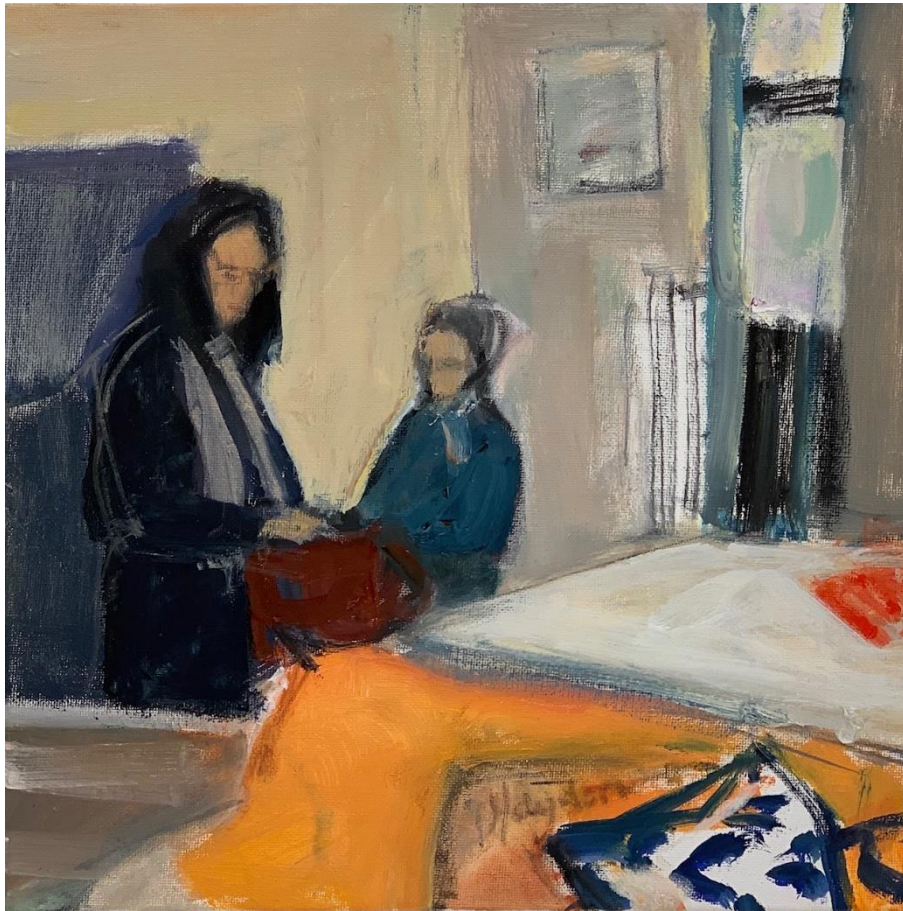
'Reader'; oil on canvas, 76x60.5cm, framed, \$2,490



'The Blue Room'; oil on canvas, 50.5x61cm, framed, \$2,290



'Nic'; oil on canvas, 50.5x61cm, framed, \$2,290



'Friends'; oil on canvas, 30.5x30cm, framed, \$890



'Indigenous collection'; oil on canvas, 30.5x30cm, framed, \$890



'Claire's Place'; oil on canvas, 30.5x30cm, framed, \$890



'The Tozer's'; oil on canvas, 20x25.5cm, framed, \$790



'Still life with orange'; oil on canvas, 20x25.5cm, framed, \$790



'Morning Studio'; gouache mix media collage on paper, 28x33cm, framed, \$790



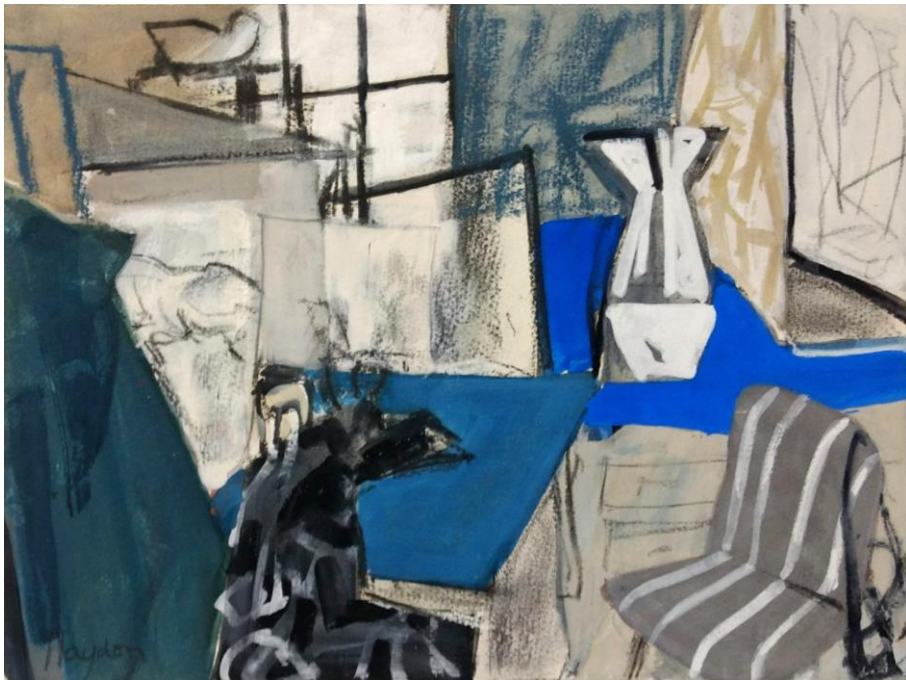
'Brunch'; gouache mix media on paper, 28x38cm, framed, \$790



'Night Kitchen'; gouache mix media, 28x38cm, framed, \$790



'Sally's Place'; gouache mix media collage on paper, 28x38cm, framed, \$790



'Marguerite's Studio'; gouache mix media on paper, 28x38cm, framed, \$790



'Katoomba Interior'; gouache mix media on paper, 28x38cm, framed, \$790



'Tozer's Place'; gouache mix media on paper, 28x38cm, framed, \$790



'The Kimono'; gouache mix media, on paper, 28x38cm, framed, \$790

For enquiries contact: info@projectgallery90.com
Kate Hopkinson Pointer 0402 144 350

All artworks shown in this catalogue are subject to availability

Project Gallery 90® 2021

90 Oxford St. PADDINGTON NSW 2021.