

PROJECT GALLERY 90

'AUBADE'

Works by:

Matilda Michell

2023 Catalogue

For enquiries contact:
Katie H-P

info@projectgallery90.com
0402 144 350

All artworks shown in this catalogue are subject to availability

Artist's Statement:

In the past, an artist's subject was often dictated by biblical or mythological narratives. While this may initially seem restrictive, it provided the artist with a driving aim that was in essence quite abstract, generally an emotional quality. They were depicting not just a specific scene but an equally important emotional quality - compassion, grief, kindness etc. They therefore had a set of artistic goals that were not strictly dictated by the literal subject. It wasn't enough for the virgin Mary to look like a woman, she had to represent tranquillity, gentleness and maternal love as well.

Once freed from the restraints of prescribed subjects, the artist, with total freedom to depict anything at all, might very well struggle to find an adequate purpose other than 'making it look like the thing it is'. And really, as an artistic aim, 'look I see some lemons and a jug' seems a little insubstantial when set against some of the great themes of the past.

This great freeing up of subject matter, being followed by the prolonged rise of photography as the primary means of documenting reality, left painting more than ever in need of a driving purpose beyond the literal visual reality of the world. There have been all sorts of solutions to this, many of which have departed from realism in various ways as a means of moving beyond the literal; abstraction, shock art, conceptual art of various kinds, art for art's sake.

For an artist operating within a realist idiom, the crucial thing is to hold an impossible aim, by which I mean that the painting should

Aubade - Matilda Michell

have an aim, decided upon by the artist, that is outside the realm of purely visual language. It may be an emotional quality or feeling, a secret narrative, the attempt to paint a fleeting, ambiguous effect of light, an expression of geometric beauty or anything else that seems a worthy but impossible ambition. The impossible aim, while certainly causing a certain amount of frustration to the artist, will enable them to drive the painting toward something other than a photographic representation of reality. It provides a worthy reason to discard things, subdue things, exaggerate things and change things and thus prevents bossy reality from running the show.

An aubade is a love song to the morning and the morning, as an entirely subjective experience, abounds in impossible aims. There is no consistent, objective difference between the morning and afternoon light. In fact, there is more variation between one morning and the next than there is between the morning and afternoon in general. There is however, a great psychological difference and, in attempting to paint the morning light, it seemed to me that I must interest myself, not only in what it looks like, but in how we feel about it, how we imagine it looks and the moods and sentiments we associate with it.

Morning is optimistic, it's light sparkling and splashing over things. It is softer, gentler than the harshness of the aggressive afternoon. It is solitary and contemplative and quiet and its beauty is quite impossible to capture. So I had a go at it.

Still life works



'Poppies' oil on canvas 45.5x50.5cm framed \$1,590



'Milk' oil on canvas 40.5x50.5cm framed \$1,590



'Still life with coffee pot' oil on canvas 56x60.5cm framed \$1,890



'Still life in green' oil on canvas 40.5x50.5cm framed \$1,590



'Morning Rose' oil on canvas 45.5x45.5cm framed \$1,550



'First light' oil on canvas 36x36cm framed \$1,390

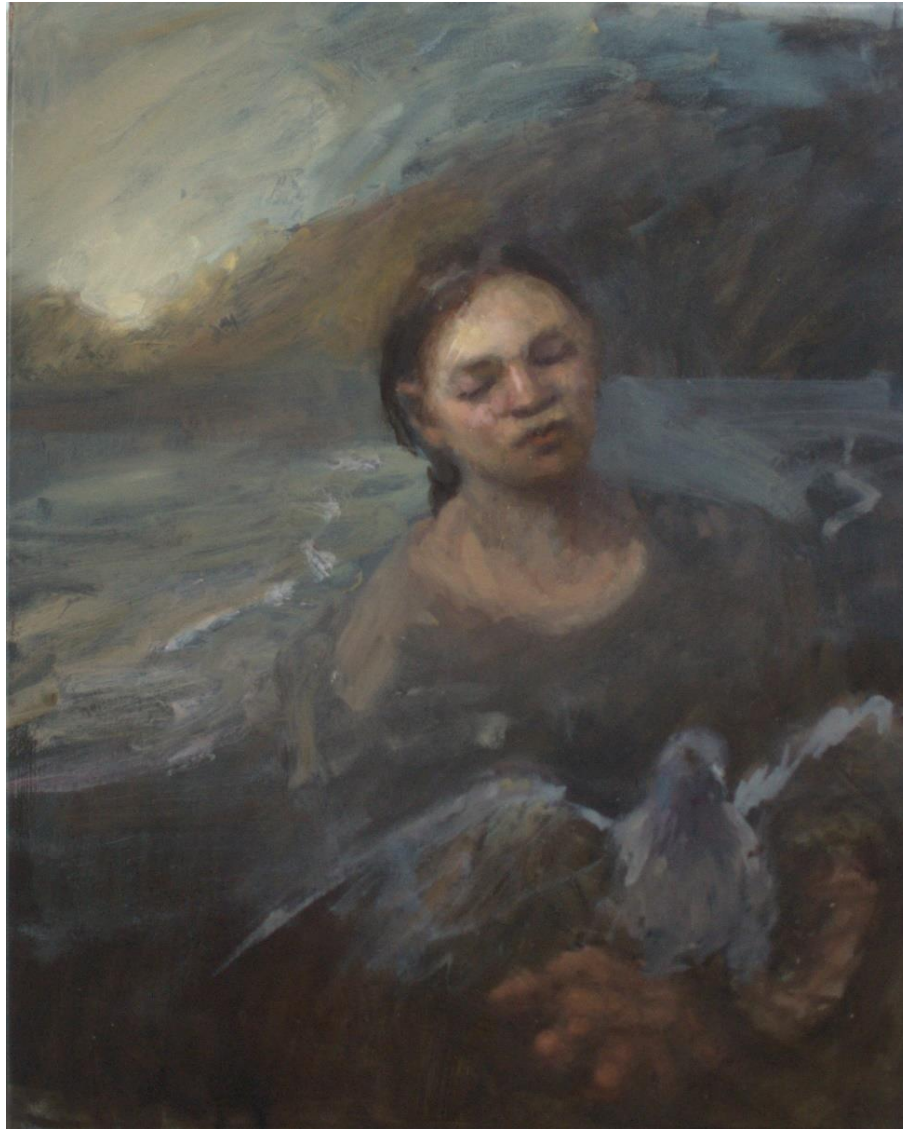


'Summer Song' oil on canvas 46x56cm framed \$1,750

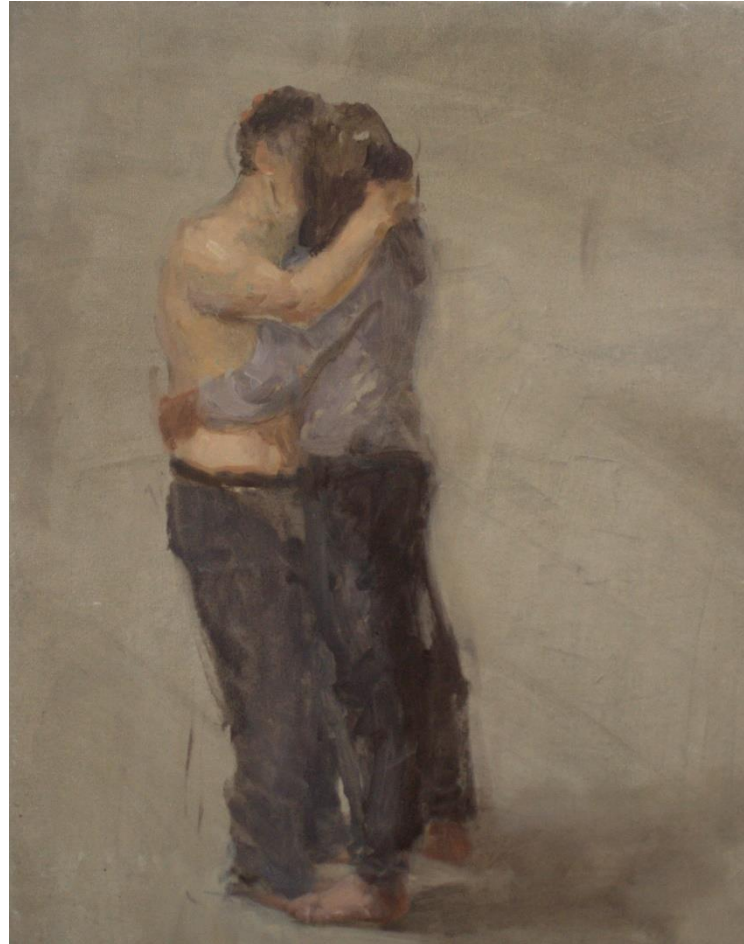


'Still life in red and gold' oil on canvas 40.5x50.5cm framed \$1,590

Figurative works



'Flight' oil on canvas 51x41cm framed \$1,550



'Cuddle study 1' oil on canvas 45.5x36cm framed
\$1,390



'Cuddle study 2' oil on canvas 45.5x36cm framed
\$1,390



'Cuddle study 3' oil on canvas 45.5x36cm framed
\$1,390



'At the window' oil on canvas 60.5x45.5cm framed \$1,790

Interior works



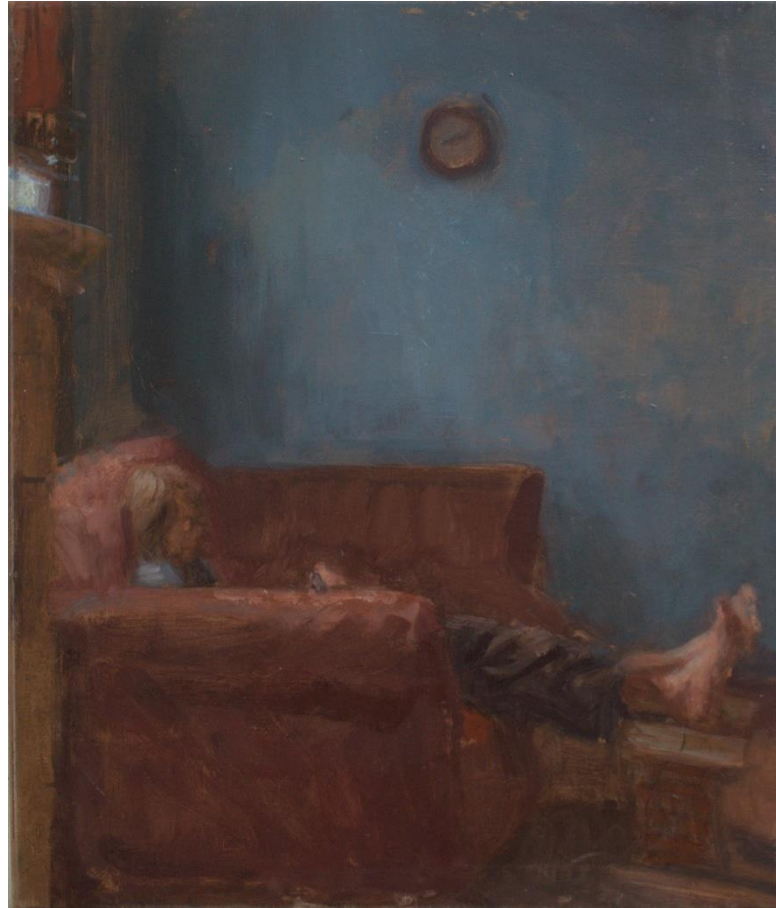
'Beginning' oil on canvas 56x40.5cm framed \$1,690



'In passing' oil on canvas 71x45.5cm framed \$2,190



'Impression sunrise' oil on canvas 56x46cm framed \$1,750



'The light behind' oil on canvas 36x30.5cm framed
\$1,290



'Sunshine and water' oil on canvas 50.5x56cm framed \$1,790



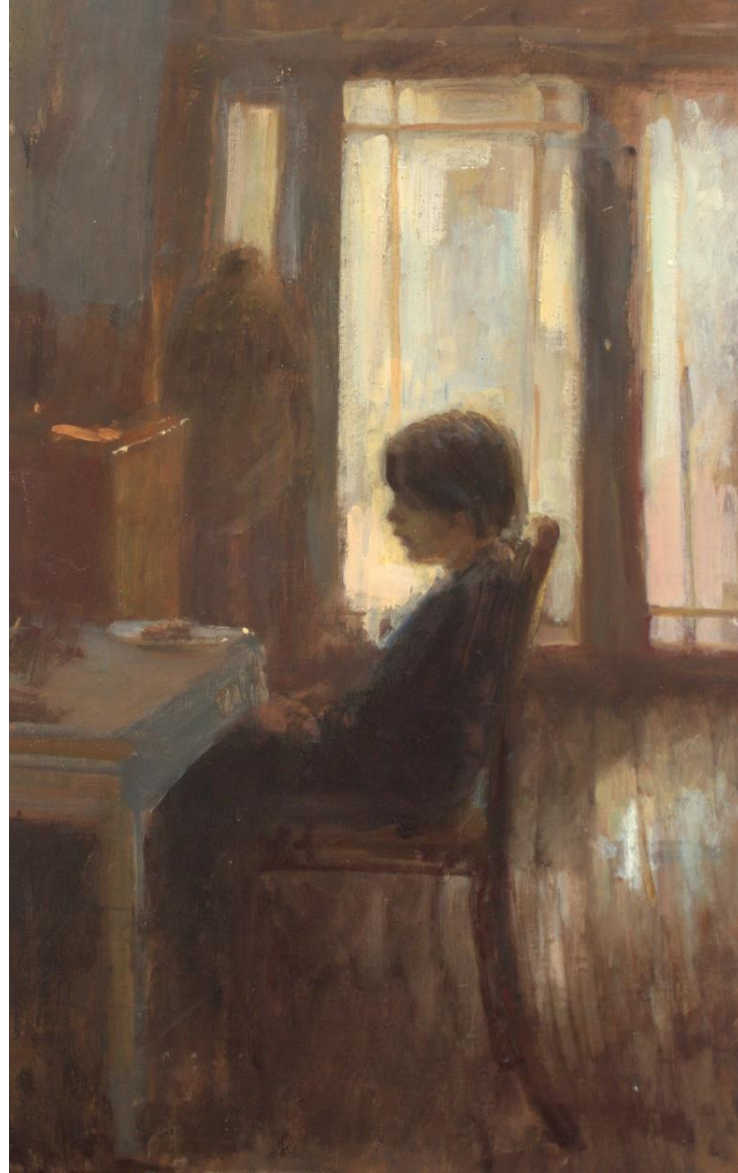
'The gap in the curtains' oil on canvas 50.5x50.5cm framed \$1,750



'Aubade' oil on canvas 50.5x40.5cm framed \$1,550



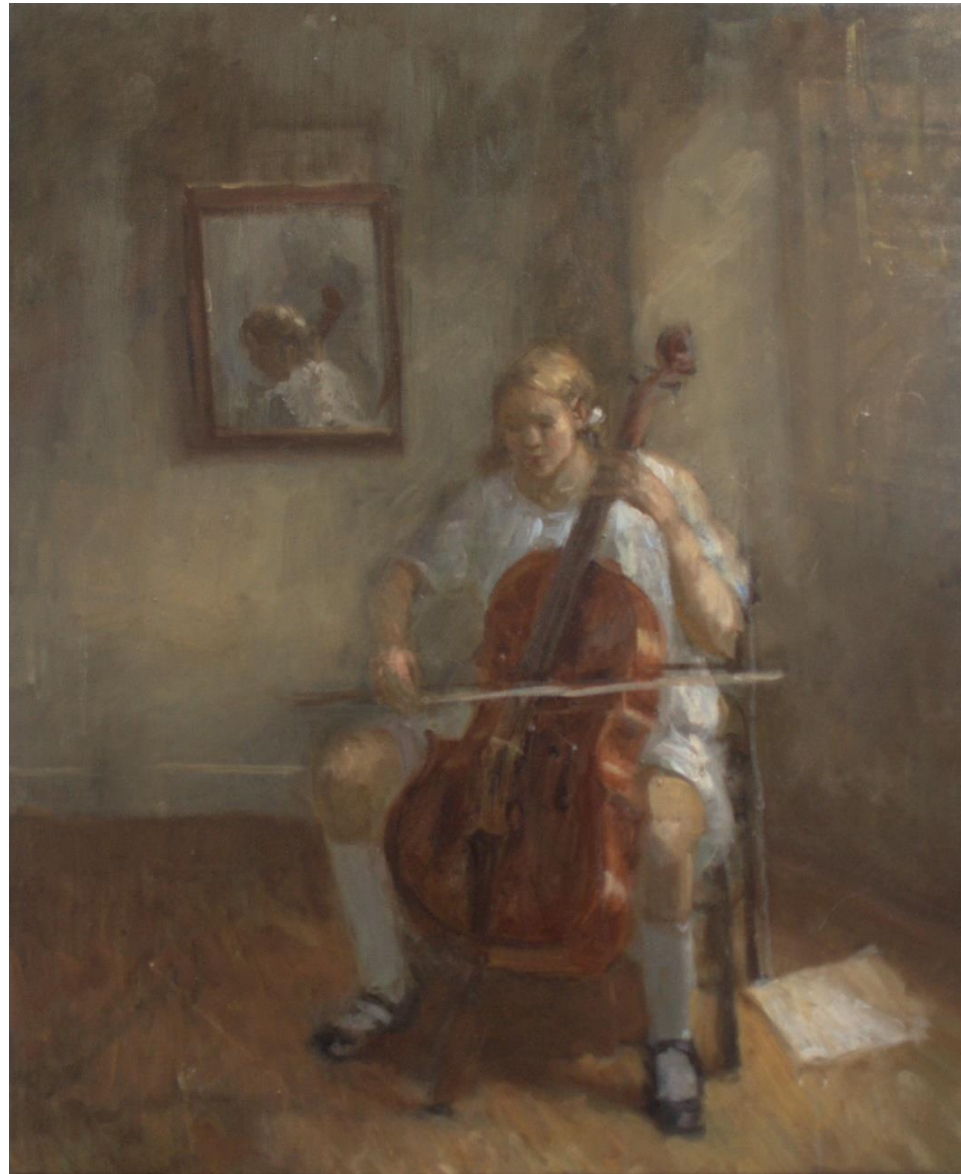
'Farewell' oil on canvas 30.5x35.5cm framed \$1,290



'Beforehand' oil on canvas 56x35.5cm framed
\$1,590



'Milkmaid' oil on canvas 60.5x50.5cm framed \$1,790



'Broken silence' oil on linen 60.5x50.5cm framed \$1,790



'Last night's dishes' oil on canvas 76x60.5cm framed \$2,390



'Morning coat' oil on canvas 60.5x50.5cm framed \$1,790



'Morning and memory' oil on canvas
30x28cm framed \$1,190



'White to move' oil on canvas 60.5x60.5cm framed \$1,890

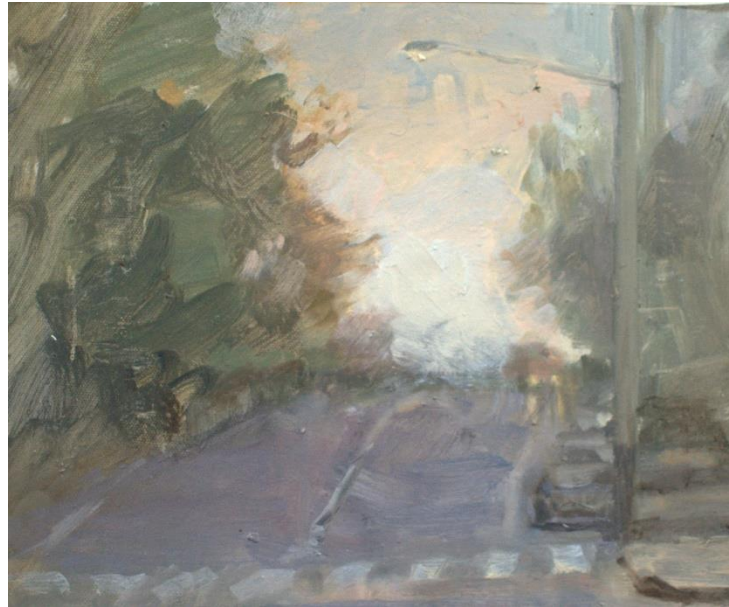
Landscape works



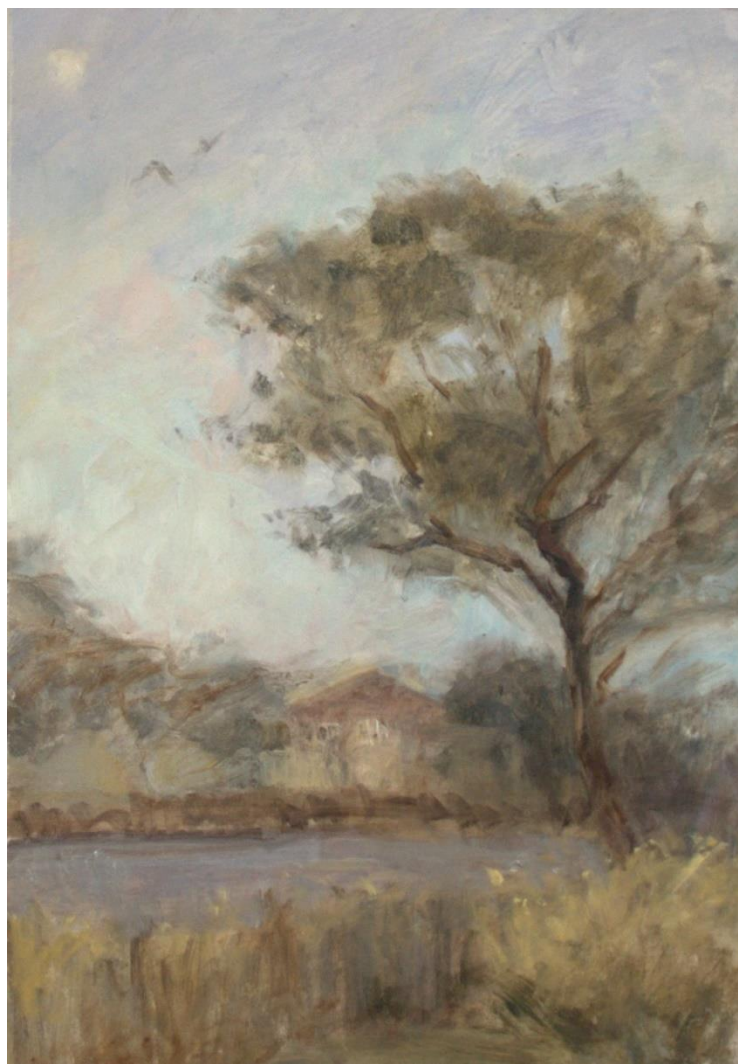
'Unruly sun' oil on canvas 31.5x23.5cm
framed \$1,150



'Shrouded sun' oil on canvas 23x28cm framed \$1,090



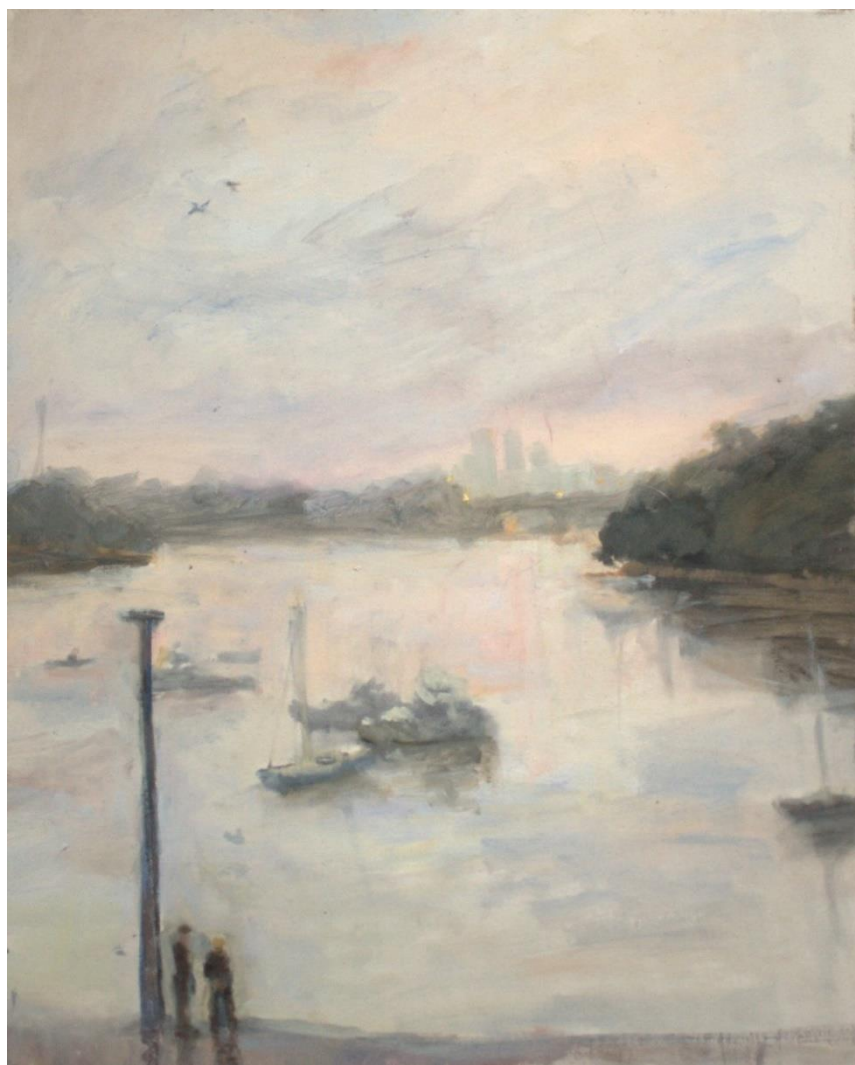
'Winter morning' oil on canvas 20.5x25.5cm
framed \$990



'Leftover moon' oil on canvas 51x36cm framed
\$1,490



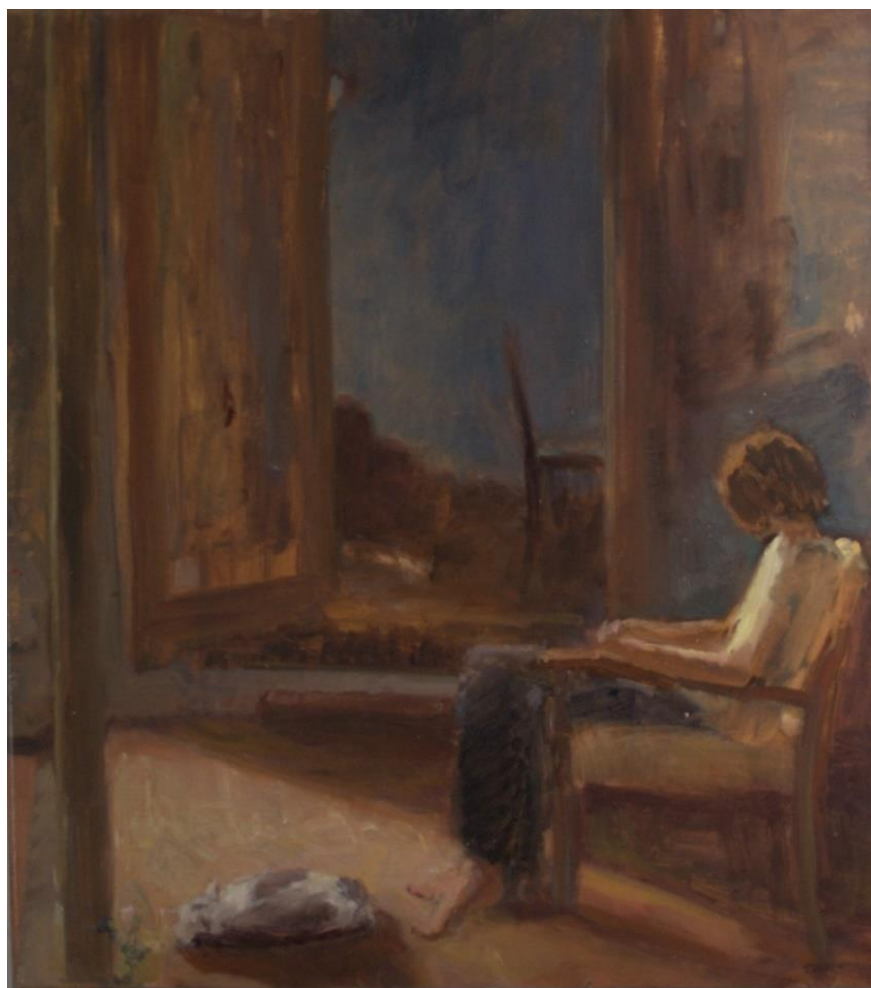
'Where the light is' oil on canvas 51x40.5cm framed \$1,550



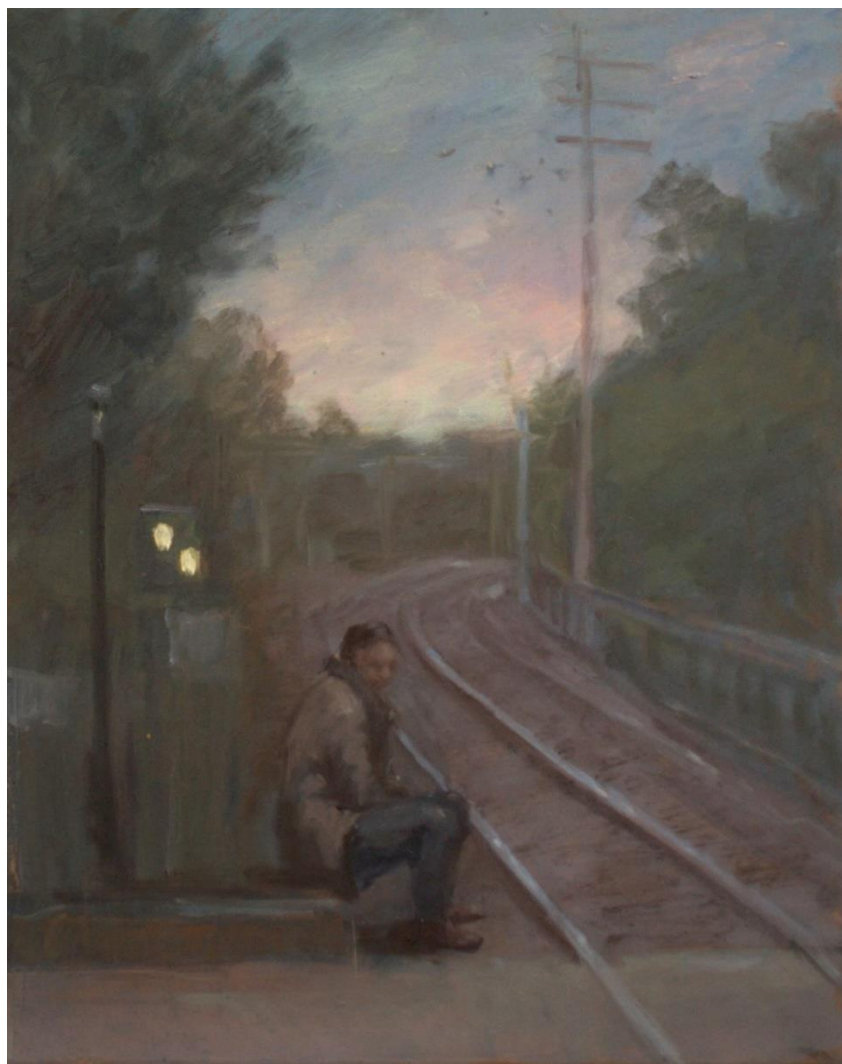
'After the rain' oil on canvas 51x41cm framed \$1,550



'In the shade' oil on canvas 51x40.5cm framed \$1,550



'Outside' oil on canvas 41x36cm framed \$1,450



'On the way' oil on canvas 51x40.5cm framed \$1,550



'Shifting shore' oil on canvas 36x40cm framed \$1,450

For enquiries contact: info@projectgallery90.com
Katie H-P 0402 144 350

All artworks shown in this catalogue are subject to availability