

PROJECT GALLERY

'The Story of Two'

Works by:

Clare Lewis & Zoe Willey

March – April 2025 Catalogue

For enquiries contact: info@projectgallery90.com

0402 144 350

*All artworks featured in this catalogue are subject to availability
and may no longer be available due to sale or other circumstances*

Contents

Works by:

[Zoe Willey](#) [1](#)

[Clare Lewis](#) [22](#)

Zoe Willey

Artist's Statement

I view this body of work as a capsule of my practice and the various genres it spans. Working in oil paint and employing a painterly style at the intersection of impressionism and realism, my aim is always to capture the intangible 'essence' of a subject. This is a philosophy learnt from portraiture which now deeply influences my landscape and still life works.

Unique to this collection is the commencement of several Sydney-specific series, including 'Ocean Pools' and 'Sydney Terraces', alongside my ongoing 'Beach People' series (which speaks to a broader notion of Australian beach culture). Inspired by a visit down in mid-January, these new works capture pockets of Sydney's architecture, landscape and lifestyle through the romantic lens of an outsider.

My still life practice seeks to elevate the mundane, celebrating the understated beauty found within small moments. Subjects such as seasonal fruit, bread and plants are paired with or placed within thoughtfully collected ceramic and chinoiserie vessels. They are then arranged against simple linen and concrete backdrops. The resulting scenes have a sense of quiet calm delicately balanced with vitality.



'Under the Gumtree (Sydney Terrace No.3)' oil on cradled birch panel 50x40cm framed \$1,590



'Dappled Summer Light (Sydney Terrace No.1)'
oil on cradled birch panel 40x30cm framed
\$1,390



'Across the River (Brunswick Heads)'
oil on linen panel 25x20cm framed
\$550



'House with the Blue Door (Sydney Terrace No.2)' oil on linen panel 25x25cm framed \$650



'The Sunbathers (Ocean Pool No.2)' oil on cradled birch panel
40x40cm framed \$1,490



'The Swimmers (Ocean Pool No.1)'
oil on cradled birch panel
25x20cm framed \$550



'Bondi Morning (Ocean Pool No.3)' oil on cradled birch panel 30x30cm framed \$750



'Tamarama Bathers (Beach People No.10)' oil on cradled birch panel 20x25cm framed \$550



'Late Afternoon Sunbathers (Beach People No.8)' oil on cradled birch panel 20x20cm framed \$490



'Beach People No.9' oil on cradled birch panel 20x20cm framed \$490



'Plant Portrait No.4' oil on cradled birch panel 40x40cm framed
\$1,490



'Plant Portrait No.2' oil on cradled birch panel
30x30cm framed \$750



'Lemons in Chinoiserie Bowl (No.2)' oil on cradled birch panel 22.8x30.5cm framed \$690



'Pears on Ceramic Plate' oil on cradled birch panel
22.8x30.5cm framed \$650



'Gin and Tonic (No.2)' oil on cradled birch panel 20x20cm framed \$490



'Pear and Chinoiserie Jug' oil on cradled birch panel
20x25cm framed \$550



'Nectarines in Chinoiserie Bowl' oil on cradled birch panel
22.8x30.5cm framed \$690



'Olive Bread and Truss Tomatoes' oil on cradled birch panel
22.8x30.5cm framed \$650



'Truss Tomatoes in Ceramic Bowl (No.2)' oil on cradled birch panel 20x25cm framed \$550



'Pears on Charcoal Cloth' oil on cradled birch panel 20x20cm framed \$490

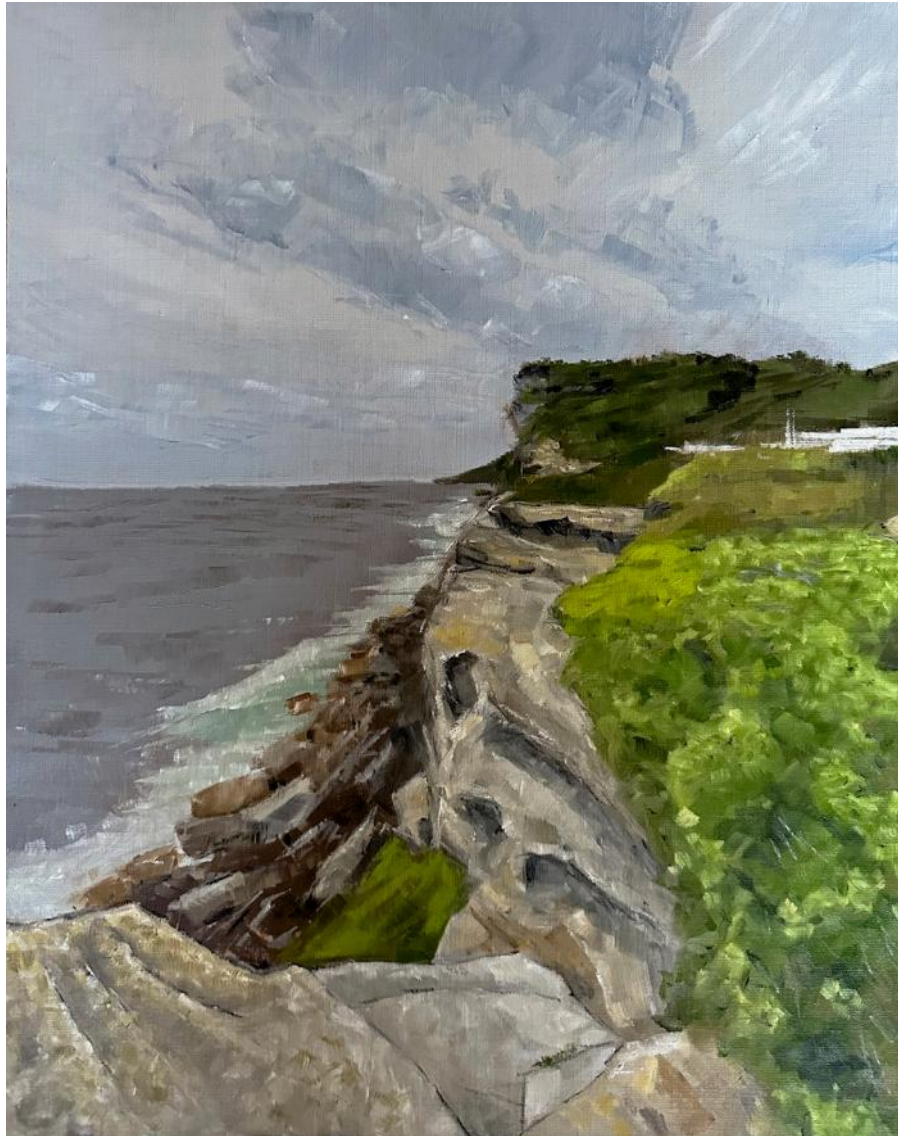
Clare Lewis

Artist's Statement

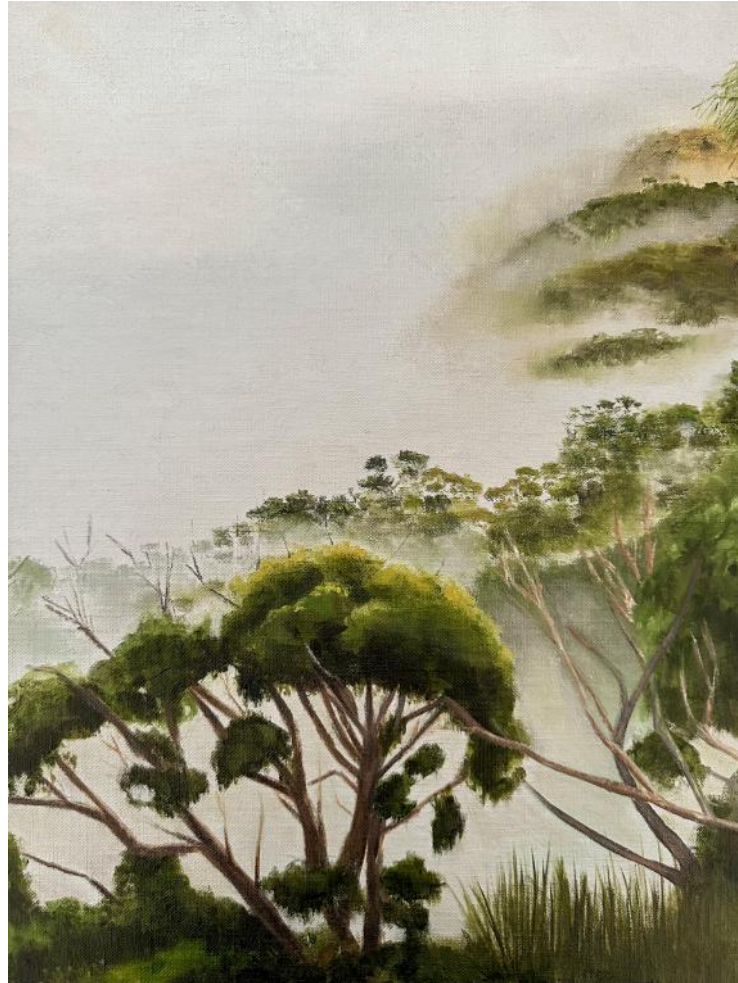
The pristine bushland surrounding my off grid pod in the Southern Highlands evokes an emotional response. I want to convey this sense of awe in the landscapes I paint. Other landscapes are inspired while travelling in the car or trips to the coast, they all begin with a feeling of excitement that compels me to capture it. My still life paintings emerge from noticing some amazing light creating interesting shadows. Light transforms fruit into sculptural forms and ceramic pieces from my travels, local artists and secondhand shops feature.



'Neighbouring Guula Ngurra' oil on canvas 50.5x76cm framed \$1,690



'Pushed to the Edge' oil on Belgium linen panel 51x40.5cm
framed \$1,390



'Early Morning Mist' oil on linen panel 40.6x30.5cm
framed \$990



'Night Driving I' oil on canvas panel 40.6x30.5cm
framed \$990



'Night Driving II' oil on canvas panel 40.6x30.5cm
framed \$990



'Night Driving III' oil on canvas panel 40.6x30.5cm
framed \$990



'Night Driving IV' oil on canvas panel 40.6x30.5cm
framed \$990



'North Sydney Evening' oil on canvas panel 30.5x40.6cm framed \$990



'Racing Clouds Bombay' oil on Belgium linen 30.5x40.6cm framed
\$990



'Cabarita Beach Reflections I' oil on canvas panel 30.5x40.6cm
framed \$990



'Cabarita Beach Reflections II' oil on Canvas panel 30.5x40.6cm
framed \$990



'Another Day at the Ridge' oil on canvas panel
25.5x25.5cm framed \$750



'Breaking Through' oil on canvas panel
25.5x25.5cm framed \$750



'Heading Home' oil on canvas panel
25.5x25.5cm framed \$750



'Kitchen Window' oil on canvas board
30.5x25.5cm framed \$790



'Grapefruit Half' oil on linen 40x40cm framed \$1,290



'Dragonfruit, Pomegranate with Espresso Mug' oil on Belgium linen 41x41cm framed \$1,290



'Love Espresso with Biscotti' oil on Belgium linen 41x41cm framed
\$1,290



'Packham Pears' oil on linen 40x40cm framed \$1,290



'Pears on Linen' oil on linen board 40.6x30.5cm
framed \$990



'Mandarins on Linen' oil on linen board
40.6x30.5cm framed \$990



'Pomegranates on Linen' oil on Belgium linen
25.5x25.5cm framed \$750



'Nectarines in Bowl' oil on Belgium linen
25.5x25.5cm framed \$750

For enquiries contact: info@projectgallery90.com

0402 144 350

*All artworks featured in this catalogue are subject to availability
and may no longer be available due to sale or other circumstances*