

# PROJECT GALLERY 90

## 'A SENSE OF PLACE'

Works by:

Elena Larkin | Rhett Brewer | Rosy Lloyd

Gemma Brook | Margaret Dix

2023 Catalogue

For enquiries contact:

Katie H-P

[info@projectgallery90.com](mailto:info@projectgallery90.com)

0402 144 350

*All artworks shown in this catalogue are subject to availability*

## Contents:

<a href="#">Works by Rhett Brewer</a>	<a href="#">1</a>
<a href="#">Works by Gemma Brook</a>	<a href="#">4</a>
<a href="#">Works by Margaret Dix</a>	<a href="#">13</a>
<a href="#">Works by Elena Larkin</a>	<a href="#">23</a>
<a href="#">Works by Rosy Lloyd</a>	<a href="#">36</a>

Works by Rhett Brewer



'Blue Bird, Red Light, Blackheath' acrylic on board 40x70cm framed \$2,200



'Late Afternoon Haze, Narrow Neck' acrylic on board 40x70cm framed \$2,200



'Shipleigh Gold' acrylic on board 40x70cm framed \$2,200

## Works by Gemma Brook



'Mornings surfing the waves and afternoons watching the colours emerge on the coastland' oil on marine plywood  
30x35cm framed \$890



'The red rocks that pods of dolphins swim past on their way to the sleeping giant headland' oil on marine plywood 20x25cm framed \$670



'Seals and sharks live on the coast of these cliffs surrounded the cold southern ocean' oil on marine plywood 30x35cm framed \$890





'The waves crash on the red and pink rocks as I look to the horizon' oil on marine plywood 20x25cm framed \$670



'This moody coast knows the stories of the shipwrecks and lighthouse keepers that lived right by this lookout' oil on marine plywood 30x35cm framed \$890



'Stormy surf beaches with sand that makes your feet sink'  
oil on marine plywood 25x30cm framed \$770



'Cliffs melt into the ocean as the storm fronts roll in' oil on marine plywood 25x30cm framed \$770



'Wave-battered rocks with colonies of wriggling fur seals live by the arch of the western coast' oil on marine plywood 30x35cm framed \$890

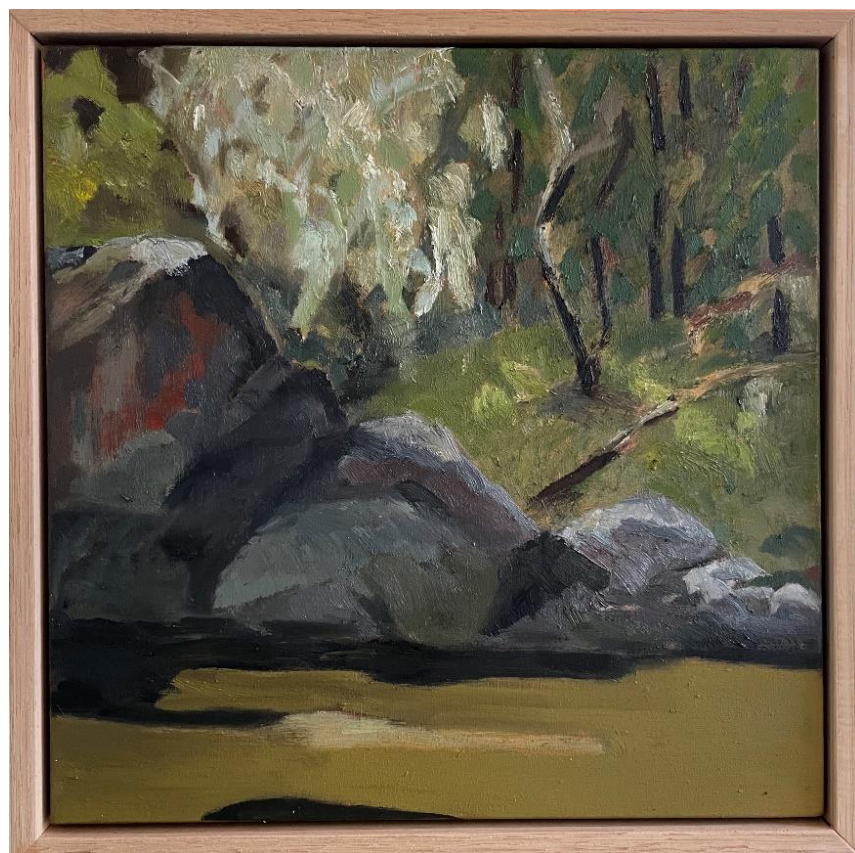


'The peninsula with caves that you climb through to find secret rock pools' oil on marine plywood 40x50cm framed \$1,290

Works by Margaret Dix



'Billabong ghosts' oil on canvas 30x30cm framed \$790



'River bank rocks' oil on canvas 30x30cm framed \$790





'May morning on the bank' oil on linen 30x30cm framed  
\$790



'Gum tree flat' oil on canvas 30x30cm framed \$790



'Sleeping tree, snowy' oil on linen 60x90cm framed \$2,000



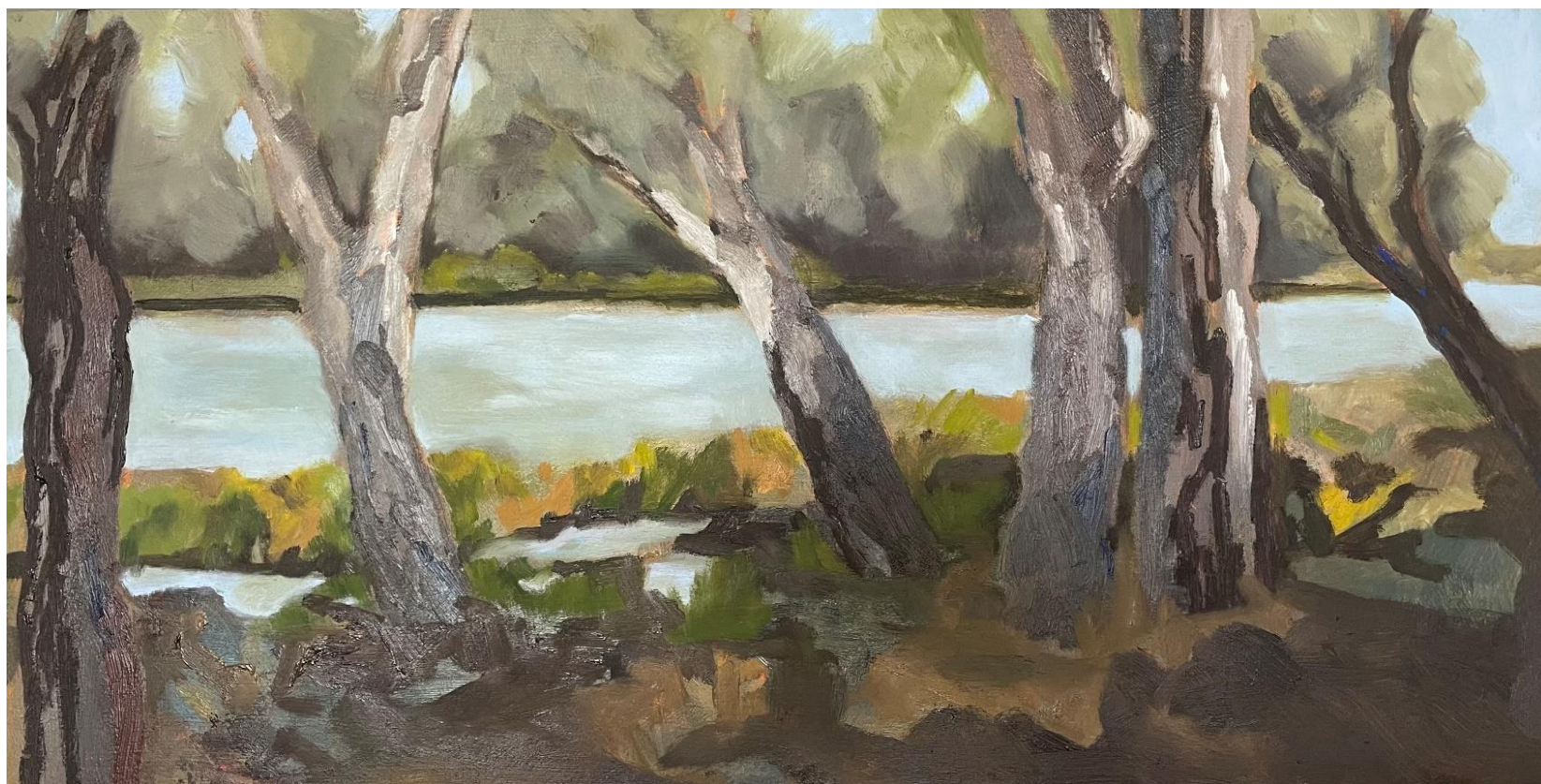
'Big boulders across the snowy' oil on linen 60x90cm framed \$2,000



'From the hide' oil on canvas 30x60cm framed \$900



'Billabong' oil on canvas 30x60cm framed \$900



'Mehi bank' oil on board 30x60cm framed \$900



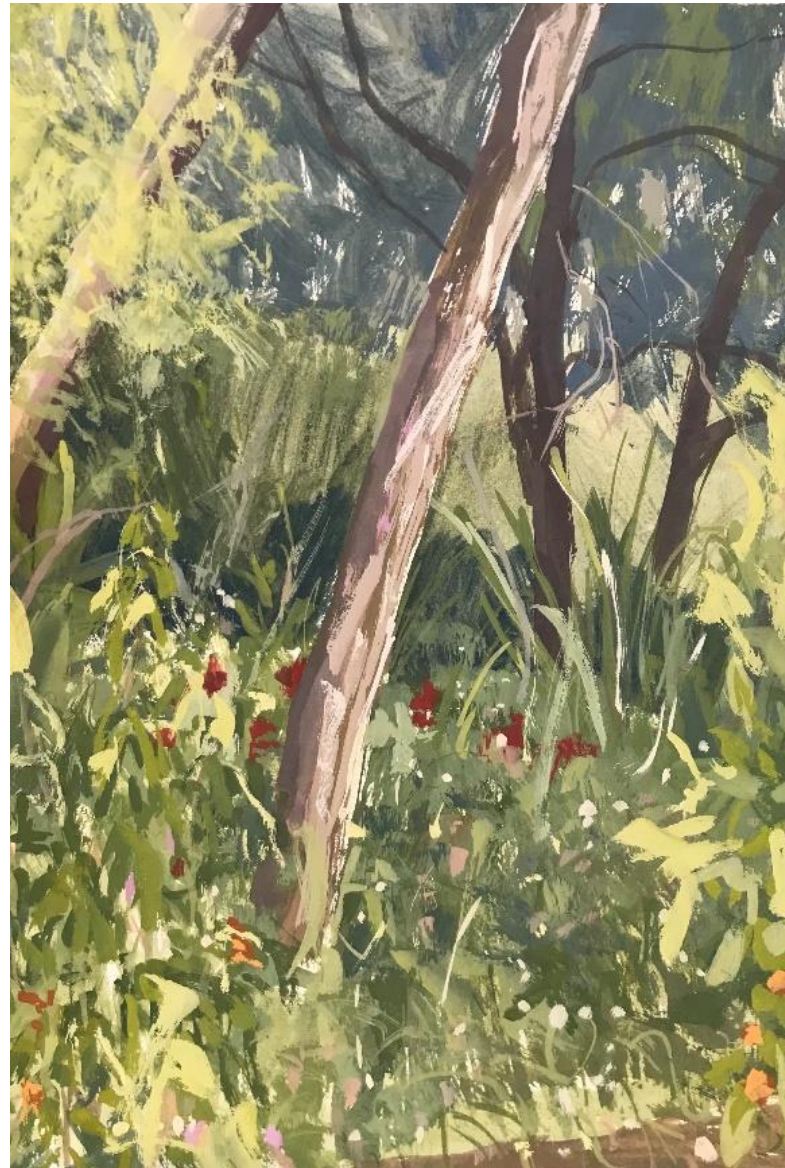
'Behind the banks' oil on canvas 30x60cm framed \$900



Works by Elena Larkin



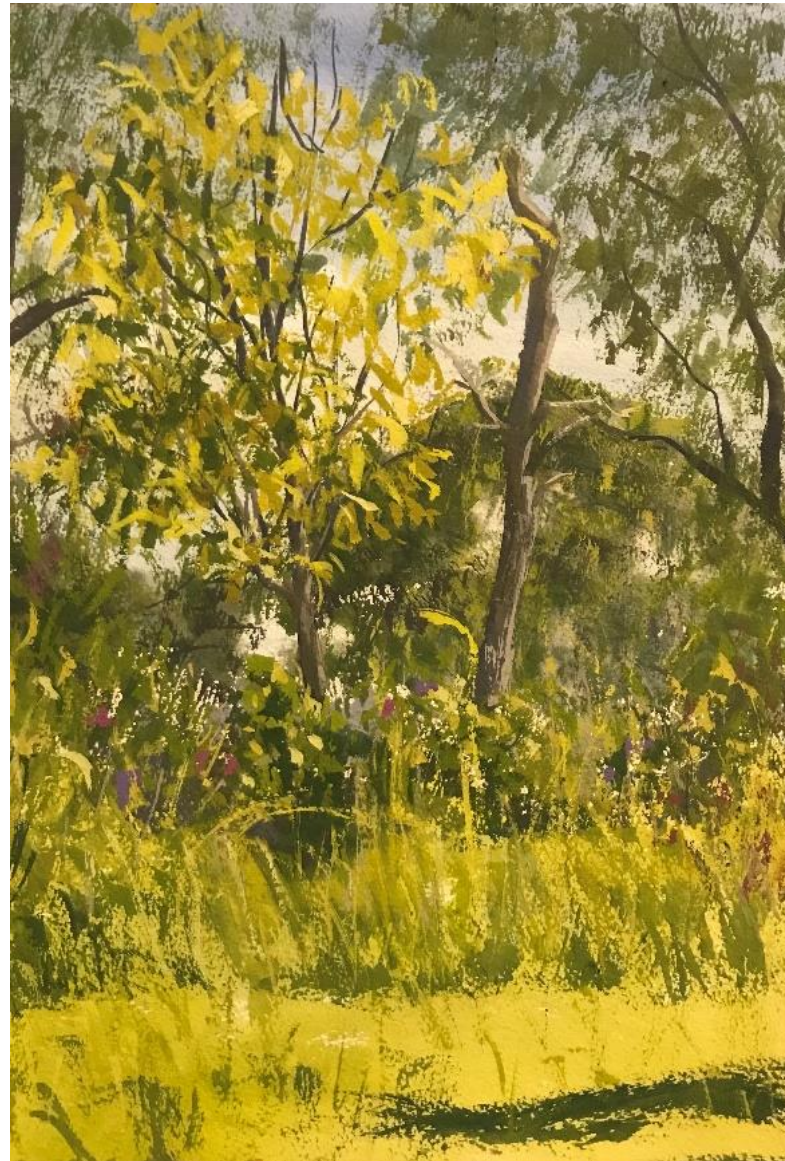
'Last light on the road to Bald Hill, Wiradjuri land, Hill End' gouache on paper  
30x42cm framed \$750



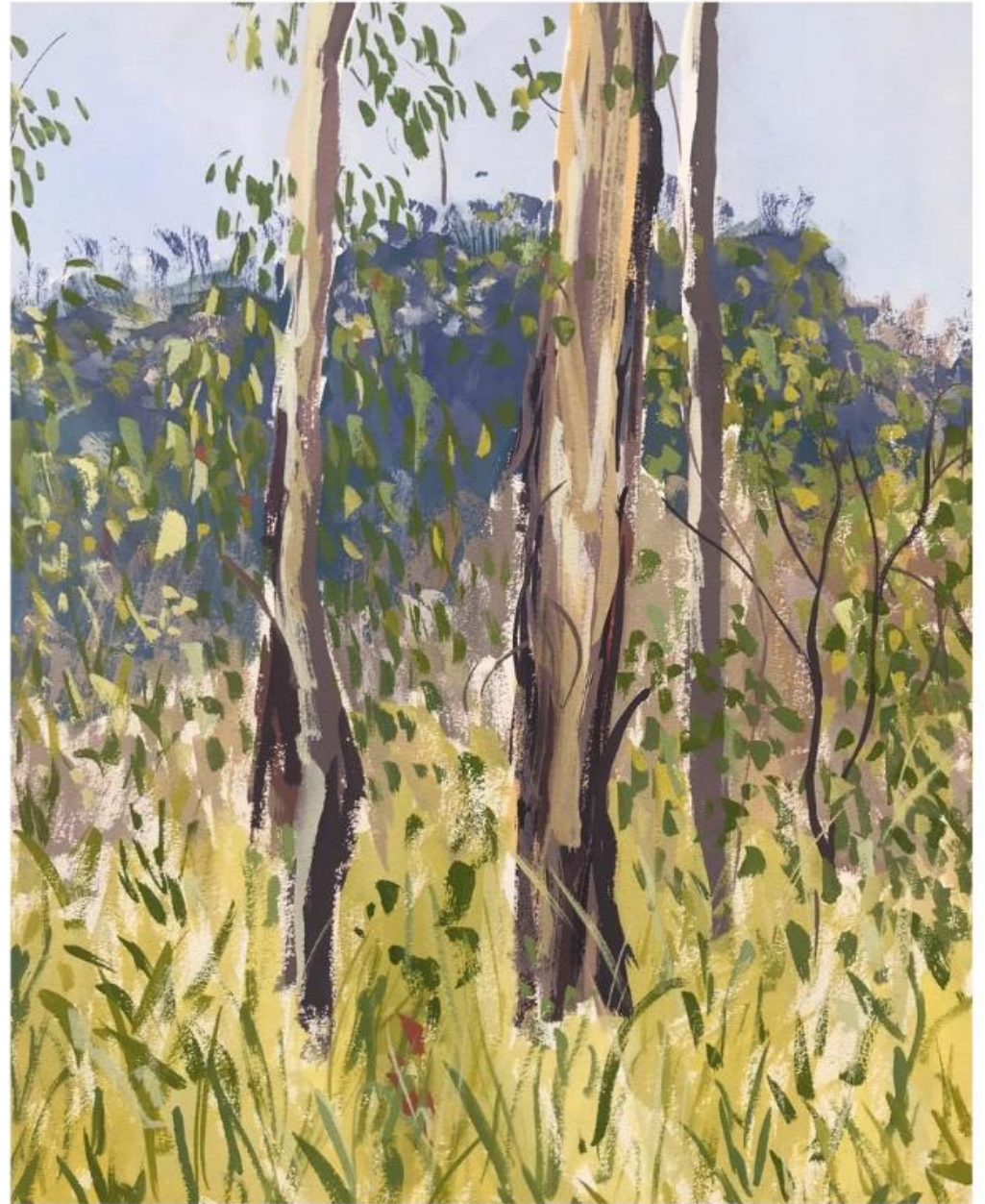
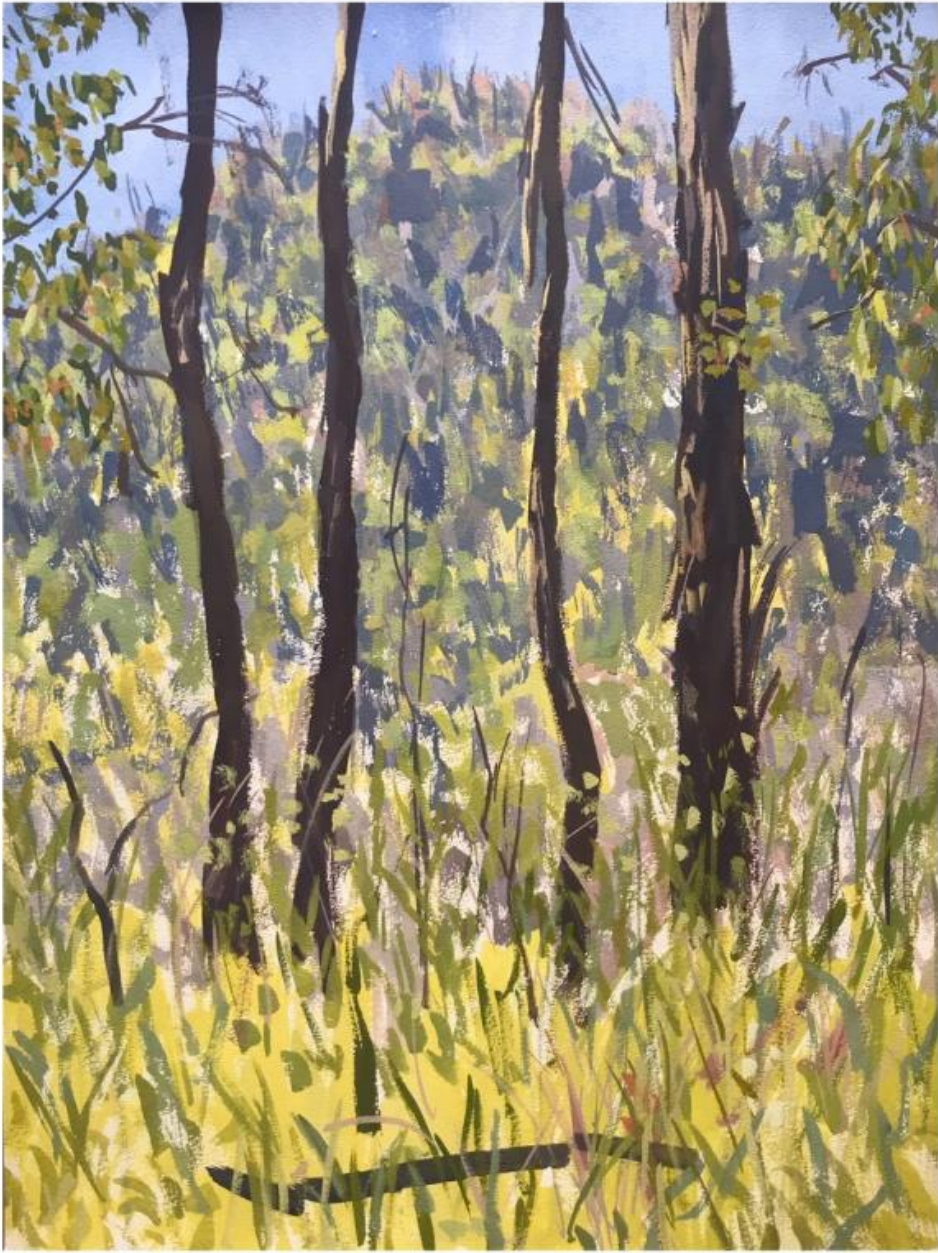
'In the garden at Warrandyte' gouache on paper  
42x30cm unframed \$550



'Early with the orange blooms and hopping roos'  
gouache on paper 42x30cm framed \$750



'The day a kookaburra stole my sandwich' gouache on paper 42x30cm unframed \$550



'Singing sweet songs' [diptych] gouache on paper 83x114cm framed \$1,900



'In the grass with Weetbix' gouache on paper 42x30cm  
unframed \$550



'A nook of shade in the middle sun' gouache on paper 30x42cm \$550



'Morning gums, Wiradjuri land, Hill End' gouache on paper 30x42cm framed \$750





'Happy boughs' gouache on paper 42x30cm unframed  
\$550



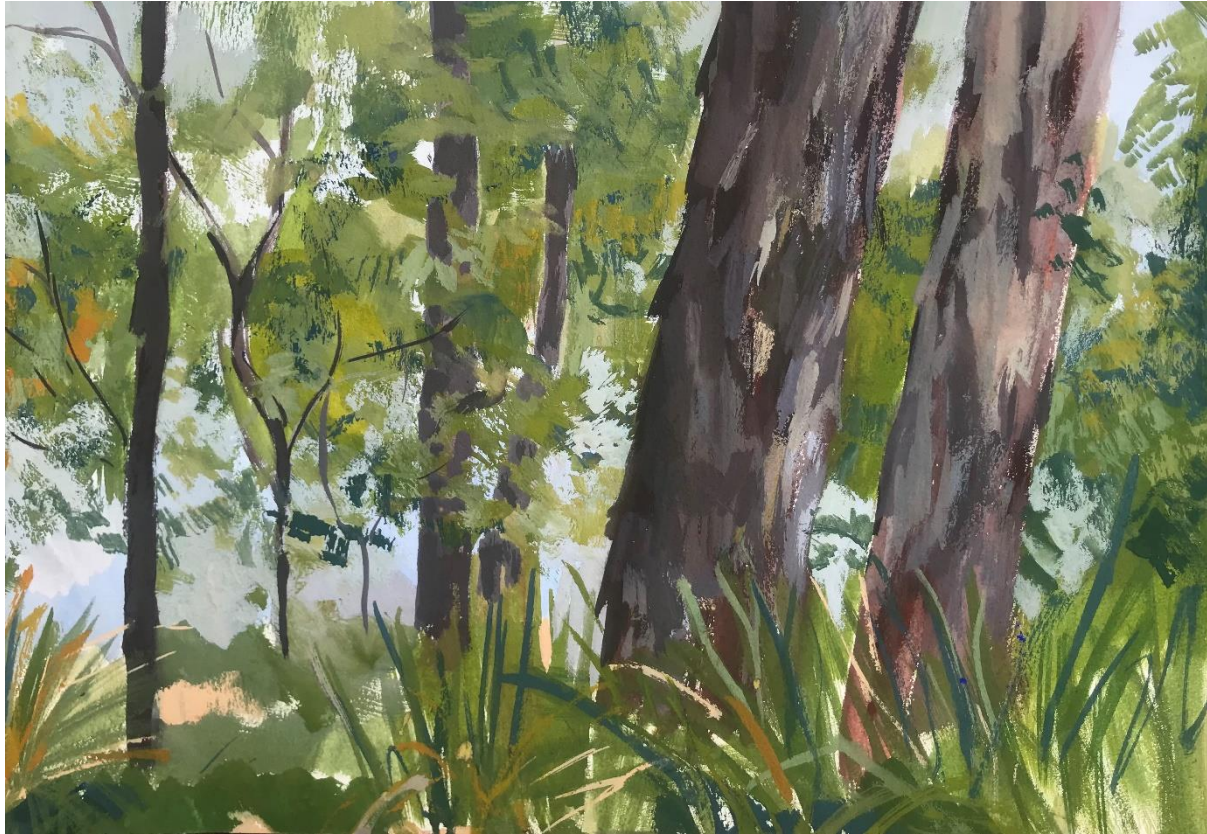
'Midday hide 'n seek at Gubbuh Gubbuh' gouache on paper 30x42cm unframed  
\$550



'Deeper roots than reason' gouache on paper 30x42cm unframed \$550



'Sunny morning on Wiradjuri country' gouache on paper 30x42cm unframed \$550



'Sprinkling rain and camp fire smoke' gouache on paper 30x42cm framed \$750

Works by Rosy Lloyd



'Luminous Quiet' oil on canvas 75x100cm framed \$2,390



'Looking Towards the Sea Mist' oil on board 59x40cm framed \$1,290



'The Beach House' oil on canvas 77x61cm unframed \$1,590

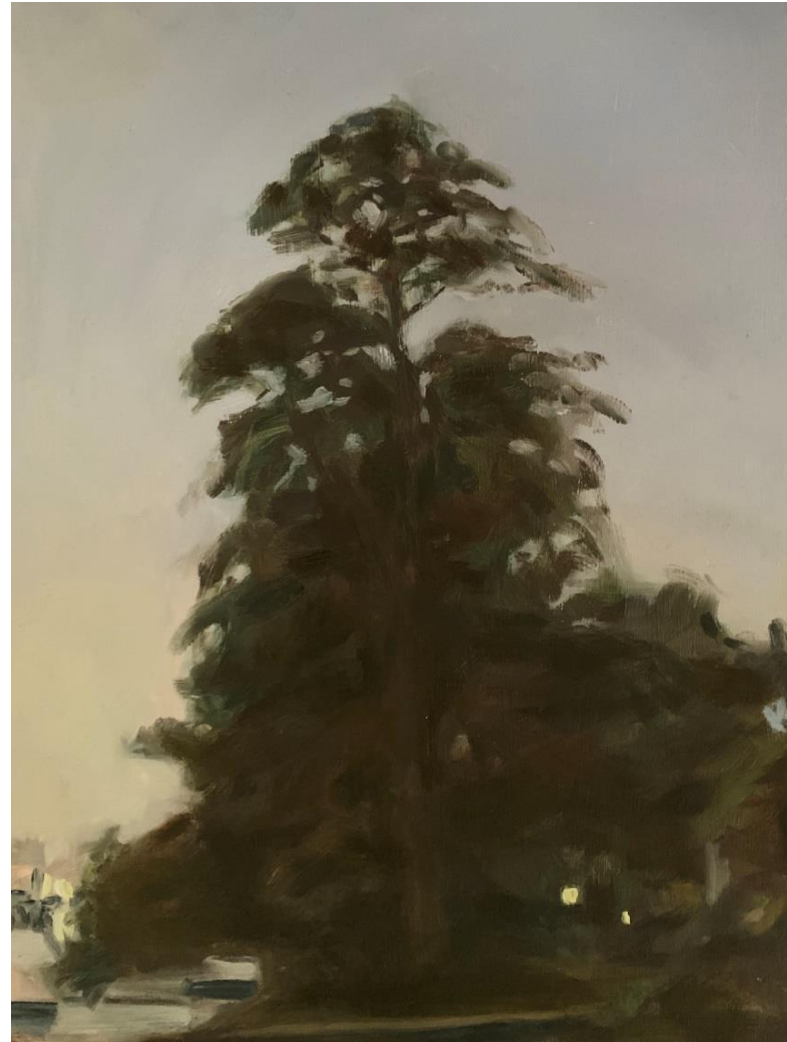




'Pittwater Sky' oil canvas 40x50cm framed \$1,190



'Houseboats at Dusk' oil on board 30x40cm framed  
\$890



'Birchgrove Tree' oil on board 30x40cm framed \$890



'Avoca Tree' oil on board 30x40cm framed \$890



'Out West' oil on canvas 30x30cm framed \$690



'On the Other side' oil on canvas 30x30cm framed \$690



'Looking North' oil on canvas 30x30cm framed \$690



'Trees By The Lake' oil on canvas 30x30cm framed \$690



For enquiries contact:  
Katie H-P

[info@projectgallery90.com](mailto:info@projectgallery90.com)  
0402 144 350

*All artworks shown in this catalogue are subject to availability*